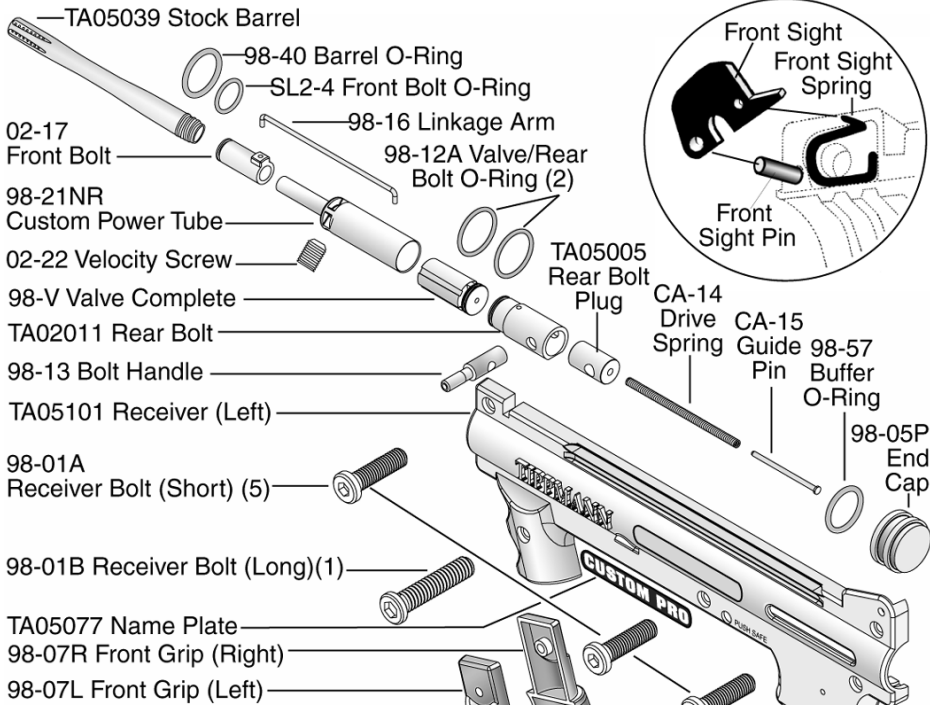
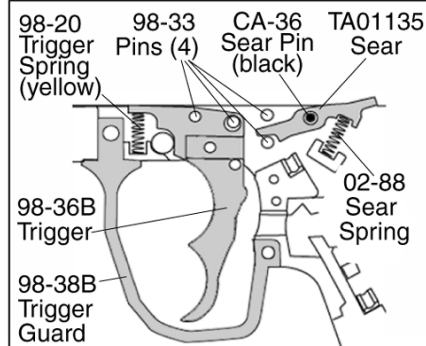
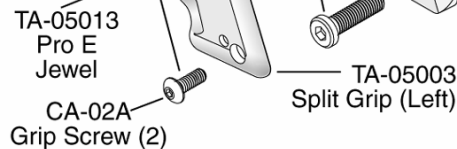


CUSTOM PRO™ WITH E-TRIGGER™ Parts List



INTERNAL VALVE PARTS:

Valve Disassembly Not Recommended



TRIGGER ASSEMBLY

- 1) Place 4 pins and 1 black sear pin into locations as shown.
- 2) Then place the trigger and sear onto pins as shown.
- 3) Insert sear spring as shown.
- 4) Insert trigger spring (yellow) as shown.

WARNING

DO NOT FIELD STRIP OR OTHERWISE DISASSEMBLE THIS MARKER WHILE IT IS PRESSURIZED WITH AIR.

TIPPMANN™
1-800-533-4831
www.tippmann.com

